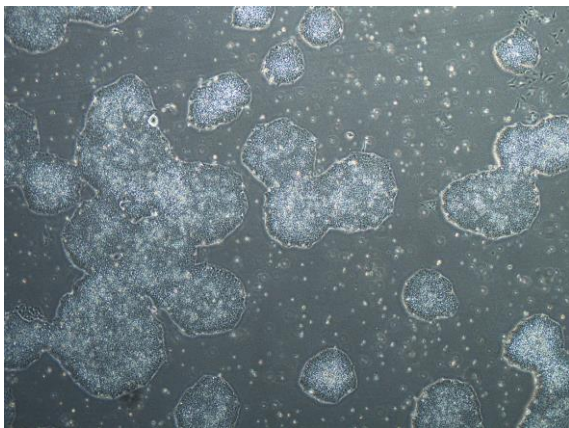
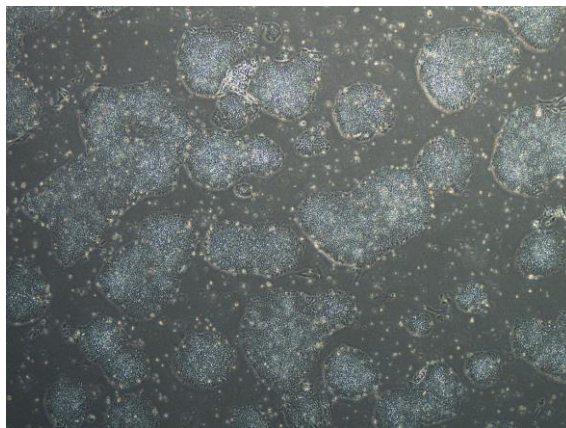


【 CiRA-j-1296 】 Morphology of iPSC colonies

CiRA-j-1296-A: passage-3



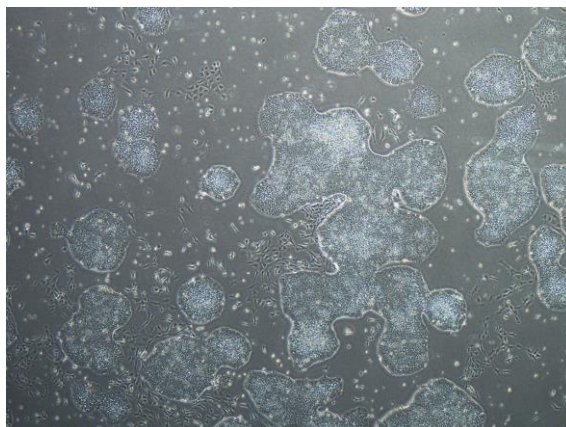
CiRA-j-1296-B: passage-3



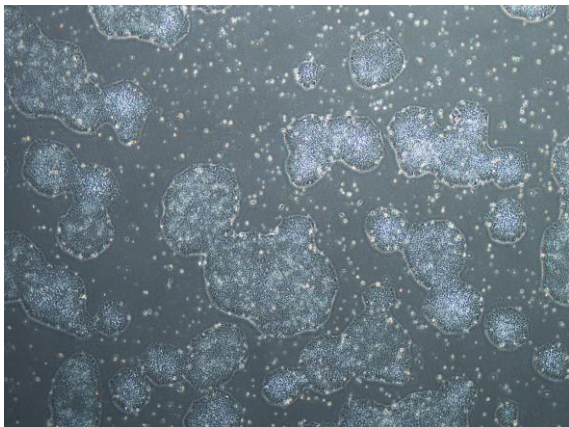
CiRA-j-1296-C: passage-3



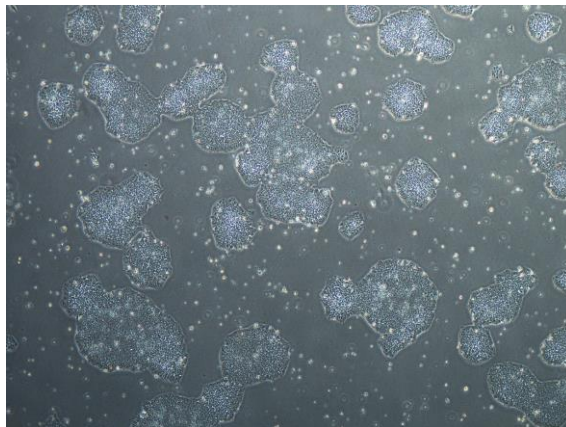
CiRA-j-1296-D: passage-3



CiRA-j-1296-E: passage-3



CiRA-j-1296-F: passage-3



(All images were captured at 4x magnification)